

xello About Me Explore Options Goals & Plans

YALE UNIVERSITY

\$49,480 In-State Less than 25% admitted 12,385 Students

Like this

Yale University is widely considered one of the great institutions of higher learning. Few schools can match the reputation it has for teaching and research. It is also one of the most selective schools. Of the tens of thousands of applicants each year, less than 7% usually get accepted.

Show More

ENROLLMENT

G 6,853 Graduate U 5,532 Undergraduate T 12,385 Total

ETHNICITY

46.5% White 11.4% Hispanic 17.3% Asian 18% Other 6.8% Black/African American

IN / OUT STATE

7% In-State 93% Out-of-State

GENDER

49% Female 51% Male

CAMPUS SETTING

Urban New Haven

CAMPUS HOUSING

YES Housing is Available

xello About Me Explore Options Goals & Plans

TECHNICAL WRITER

\$30,000 - \$100,000 College University Increasing Demand

Like this career?

EXPLORE THIS CAREER

How I Feel About This Career Like it a lot

My Notes Edit

Important Factors 3.3 / 5

Likes and Dislikes 1 1

Helpful Articles 1

SIMILAR CAREERS

Court Reporter \$30,000 - \$60,000

Medical Illustrator \$45,000 - \$100,000

Editor \$25,000 - \$85,000

Translator \$35,000 - \$90,000

Researcher \$50,000 - \$90,000

CAREER CLUSTER

Computers & Telecom Explore This Cluster

Science & Engineering Explore This Cluster

JOB DESCRIPTION

Technical writers create manuals, reports, and online help tools for clients and customers. They are experts at writing complex information so it is easier to understand.

Electronic products like computers and cameras can be tough to set up and use. The same is true for large machines like photocopiers and printers. Complex products like this tend to come with an instruction manual. The problem is that the technical terms can be hard to understand. Technical writers make these texts easier for people to read and absorb.

These writers make complicated information easy to follow. They research and write all sorts of documents, such as:

- operating and maintenance manuals
- equipment manuals
- online help files
- proposals
- procedural and policy documents
- educational materials for a wide range of products and audiences

Technical writers may help specialists communicate with each other. In this case, their audience might be engineers or scientists. Or, writers can cater to the needs of everyday consumers. The writing style they use changes for each type of reader.

Writers start an assignment by learning about the product or process. They use a few strategies to figure out what to write. They spend time studying the target audience. It is always a good idea to interview experts on the subject matter. Writers also do a lot of reading on the subject to make sure they know enough to do their job.

High School & Beyond Planning

Tesla STEM High School Spring 2021

Learning Targets



Learn how to find and investigate careers related to your interests via Xello.



Take ownership over your high school experience and choose coursework and activities that are relevant to your goals.



Understand the specific tasks and requirements you must complete this school year in order to be on track for this *important graduation requirement!*

Xello: An Introduction

Use **Xello** to explore your **interests, skills, learning styles**, and to research **careers, school subjects, colleges, and majors** in depth.

Xello allows you to complete steps each year for your **High School and Beyond Plan** in a fun, interactive, online format.

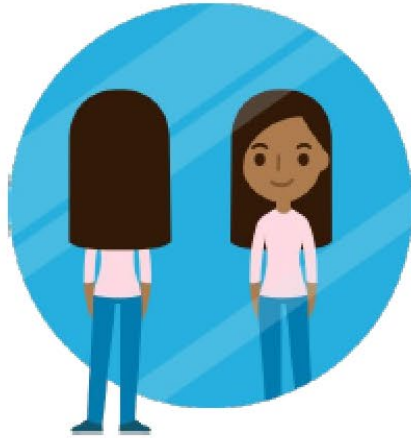
Completing your High School and Beyond Plan is a Washington High School **graduation requirement**.

Your High School and Beyond Plan is also a **personalized portfolio** for you to create a **pre-resume** and track your personal achievements, experiences (work, volunteer, education, life).

It will help you **plan** and map out **your future!**

[Video Intro available here or in the .ppt version of this document]

Build Self-knowledge



Students define their interests, skills, preferences and aspirations so they can explore the opportunities right for them.

Explore Options



Students learn about career possibilities and educational pathways by exploring rich engaging content and lessons.

Create a Plan



Students create dynamic actionable plans that outline the steps needed to achieve school, career and life goals.

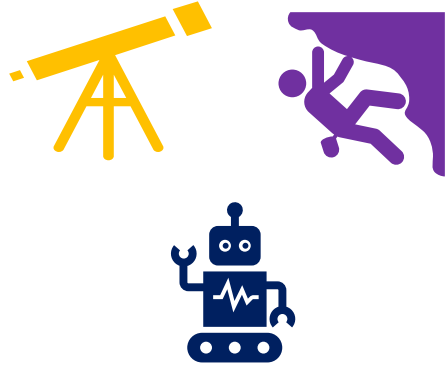
Learn & Reassess



As students gain experience, knowledge, and skills, they can reassess and change their plans for the future.

THE STUDENT EXPERIENCE

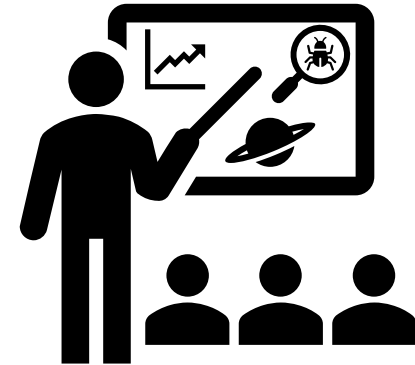
Consider...



What kinds of things draw you in? Your **interests** are a big part of your identity and are important to consider as you start planning your future.



Do you have an idea or vision of **what comes next** for you after high school? How does your plan relate to the courses you're taking now?



How do your high school course selections **relate** to your interests?

LET'S GET STARTED: STEP ONE

Log on to Xello and complete the **ABOUT ME** section. There are 4 components in this section to complete:

- ☐ Matchmaker
- ☐ Personality Style
- ☐ Mission Complete
- ☐ Learning Style

[Video walkthroughs available here or in the .ppt version of this document]

How To Access Your SSO Xello Account:

1. Click [this link](#)-it will take you to a LWSD website.
2. Scroll down and click the button that says [Xello](#) and you're in, no password needed!

STEP TWO: Complete the Core Lessons for your grade (and finish up any you forgot from past years)

9th Grade

- Exploring Career Factors
- Personality Styles
- Getting Experience
- 4-year Course Plan & Goals

10th Grade

- Program Prospects
- Workplace Skills & Attitudes
- 4-Year Course Plan & Goals

11th Grade

- Career Demand
- FAFSA Resources
- 4-year Course Plan & Goals

12th Grade

- Review, update, and upload your **FINAL RESUME**
- FAFSA Confirmation:** In the FAFSA lesson, copy and paste this text in the box and hit submit: *"I confirm that I have received information about financial aid options from Tesla STEM High School and I understand who to ask if I have questions"*
- Complete the 4-Year Course Plan Document

0% **Core Lessons** Grade 9

About Me

Matchmaker ✓
 Personality Style ✓
 Mission Complete ✓
 Learning Style ✓
 Skills Lab ✓

Explore Options
 Careers
 Schools
 Majors
 Saved Options

Exploring Career Factors ✓
 Get Started

Getting Experience ✓ 0%

Personality Styles ✓ 0%

4G 4 Year Course Plan and Educational Goals ✓

Assignments

You're off the hook! Nothing to see here yet!

Links & Resources

Method Test Prep [Link](#)
 Prepare for the ACT or SAT

5 Saved Options All

High School Teacher

Love it!

Physical Therapist

How do you feel about this career?

Middle School Teacher

Like it a lot!

Family Physician

Like it a lot!

School Counselor

Love it!

♥♥♥

9th Grade Lessons


- Exploring Career Factors
- Getting Experience
- Personality Styles
- 4-year Course Plan & Goals

9th Grade Xello Requirements

- Complete About Me
- Complete Core Lessons
- Save/Heart (at least) 3 Careers

0%
Core Lessons


Grade 10




Program Prospects


Get Started

UR
Uploading Your Resume


Workplace Skills and Attitudes

4G
4 Year Course Plan and Educational Goals


Exploring Career Factors



About Me


Matchmaker
Personality Style
Mission Complete
Learning Style
Skills Lab

Assignments


You're off the hook! No

Links & Resources


Method Test
Prepare for the


College Bound


High School Teacher



Career

Love it!


Physical Therapist



Career

How do you feel about this career?


Middle School Teacher



Career

Like it a lot!

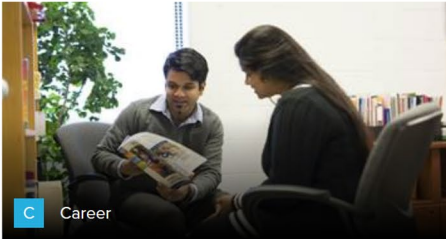
Family Physician



Career

Like it a lot!

School Counselor



Career

Love it!



10th Grade Lessons:

- Program Prospects
- Workplace Skills & Attitudes
- 4-Year Course Plan & Goals

10th Grade Xello Requirements

- Complete About Me
- Complete 10th grade Core Lessons (except resume)
- Save/Heart at least 4 careers!

0%

Core Lessons

Grade 11

About Me

Matchmaker

Personality Style

Mission Complete

Learning Style

Skills Lab

Assignments

Links & Resources

✓

Career Demand

Get Started

✓ FS

Financial Aid Resources for FAFSA, WASFA, College, and Scholarships

✓ 4G

4 Year Course Plan and Educational Goals

Personality Styles

0%

High School Teacher

C Career

Love it!

Physical Therapist

C Career

How do you feel about this career?

Middle School Teacher

C Career

Like it a lot!

Family Physician

C Career

Like it a lot!

School Counselor

C Career

Love it!

5 Saved Options

All

♥

♥

♥

11th Grade Core Lessons:

- Career Demand
- FAFSA Resources
- 4-year Course Plan & Goals

11th Grade Xello Requirements

- Complete About Me
- Complete 11th grade Core Lessons (*except resume*)
- Save/Heart at least 5careers!

SENIOR CHECKOFF!

Complete 12th grade core lessons; make sure you have the About Me Section done; and make sure that all core lessons from past years are completed!

12th Grade Core Lessons

- Review, update, and upload your **FINAL RESUME**
- **FAFSA Confirmation:** In the FAFSA lesson, copy and paste this text in the box and hit submit/turn in: *"I confirm that I have received information about financial aid options from Tesla STEM High School and I understand who to ask if I have questions"*
- Complete the **4-Year Course Plan Document** and submit/turn in

Your Reward=

***** ADDITIONAL STATE REQUIREMENTS *****
ENGLISH LANGUAGE ARTS STANDARD MET
MATHEMATICS STANDARD MET
HIGH SCHOOL AND BEYOND PLAN MET
WASHINGTON STATE HISTORY MET

CERTIFICATE OF ACADEMIC ACHIEVEMENT EARNED
WA STATE HIGHER ED PLACEMENT AGREEMENT ELA/MATH
***** END OF TRANSCRIPT RECORD *****

The screenshot displays a student dashboard for Tesla STEM High School. At the top, a 'Core Lessons' section shows 50% completion. Below this is a 'Career Path Choices' card with a 'Get Started' button. A list of lessons follows: 'Workplace Skills and Attitudes' (0%), 'Career Demand' (0%), 'Uploading Your Resume' (completed with a green checkmark), 'Financial Aid Resources for FAFSA, WASFA, College, and Scholarships' (completed with a green checkmark), and '4 Year Course Plan and Educational Goals' (completed with a green checkmark). On the right, the 'About Me' section is highlighted with a yellow circle and shows completion for 'Matchmaker', 'Personality Style', 'Mission Complete', 'Learning Style', and 'Skills Lab'. Below this are sections for 'Assignments' (empty) and 'Links & Resources' (containing links to 'Method Test Prep' and 'College Bound Scholarship Program').

Support & Additional Resources

Directly contact Ms. Brownie:
mbrownie@lwsd.org

STEM Applying to College Information

Holland Interest Test

The "original" career test. Career interests are grouped into personal strength categories - Realistic, Artistic, Investigative, Social, Enterprising, & Conventional. Identifies your strengths and makes career suggestions for you to research through (see [audiologist sample Paper/Pencil Version](#))

MBTI (Myers-Briggs Type Indicator)

A widely-used tool for researching personality type as it relates to career satisfaction (a variation of this is called the Jung Typology test). It can be eerily insightful with career recommendations! Here is an [excellent descriptor of MBTI types](#).

Career Values Test

Helps identify your values as they relate to future careers.

Washington Career Bridge

A teen-specific site and career test that helps identify career "clusters" or groupings that match your strengths.